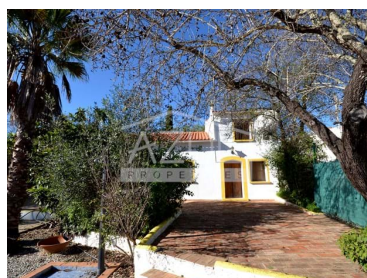




Paderne - Villa



 **3** Bedrooms
 **2** Bathrooms
 **160** Area (m²)
 **760** Land Area (m²)
 Swimming Pool



375 000 €
(EUR €)

Charming Algarvian Farmhouse

Discover serenity in this beautiful and traditional Algarvian farmhouse, where every rustic detail has been meticulously preserved. Set on a fully fenced plot, this property offers a haven from the hustle and bustle of everyday life. The garden provides a picturesque setting, perfect for enjoying moments outdoors. The inviting pool is the focal point of the garden, ideal for cooling off on sunny days. Step inside this delightful haven where every corner whispers comfort. It sprawls mainly across the ground floor, where are two cozy bedrooms, one featuring a wooden mezzanine and an attic, ready to adapt to your need. The spacious kitchen has a dedicated dining area. In the heart of the living room, a fireplace and wood-burning stove promise warmth moments. Completing the ground floor is a bathroom with a bathtub. On the first floor, there is a large suite, which includes a comfortable bedroom and private bathroom. This suite offers views of the pool and garden, ensuring plenty of light. This property provides a peaceful and welcoming environment, an ideal setting for moments of

T +351 308 801 913 ¹ · T +351 961 620 750 ² · E office@azul-properties.com
 Loja E, Edifício Fonte Nova, EN 125 8100-069 Fonte de Boliqueime
 AMI 5604

¹ (Call to national fixed network) | ² (Call to national mobile network)



1009-2347

Reference

Scan the QR code to view the property



relaxation and rest. Plus, it has a few neighbors nearby, offering a perfect balance between privacy and a community feel. Located in a quiet rural area, but only 2 km from the Paderne Village and the wonderful beaches of Albufeira which are only 15 km away. If you are seeking a property that is effortlessly easy to maintain and lock-up-and-go, this one is truly ideal.

Property Features

- Wood burner Stove
- Annex
- Proximity: Mountain, Restaurants, Open field, Public Transport
- Land zoning: Predominantemente agrícola
- Rustic style
- Built year: 1949
- Parking
- Views: Countryside views
- Main drainage
- Quiet Location
- Energetic certification: F
- Mains water
- Unfurnished
- Fireplace
- Pool
- Garden
- Rural Property
- Farmhouse
- Floors: 2
- Storage / utility room
- Wooden shutters
- Attic
- Sealed land area
- Solar orientation: South, East
- Terrace

T +351 308 801 913 ¹ · T +351 961 620 750 ² · E office@azul-properties.com
Loja E, Edifício Fonte Nova, EN 125 8100-069 Fonte de Boliqueime
AMI 5604

¹ (Call to national fixed network) | ² (Call to national mobile network)